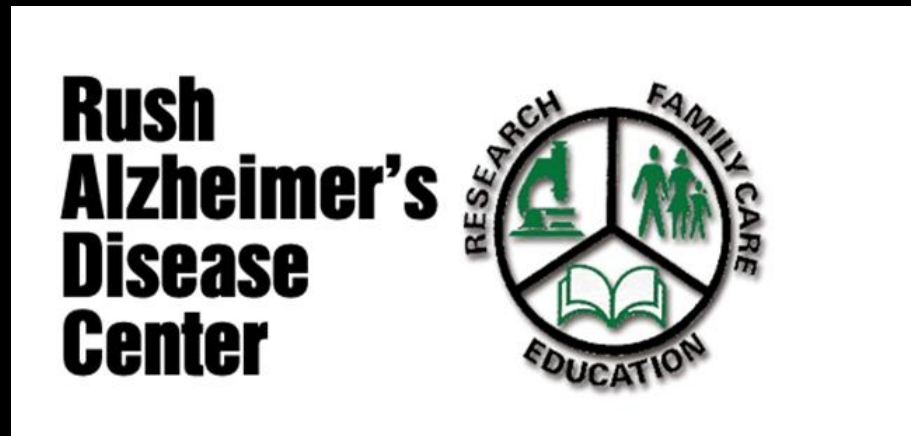


Culture, stress and impact on cognitive performance

Lisa L. Barnes, PhD

Alla V. and Solomon Jesmer Professor of Gerontology
and Geriatric Medicine



Rush University Medical Center, Chicago, IL

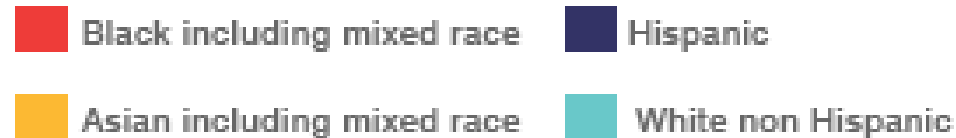
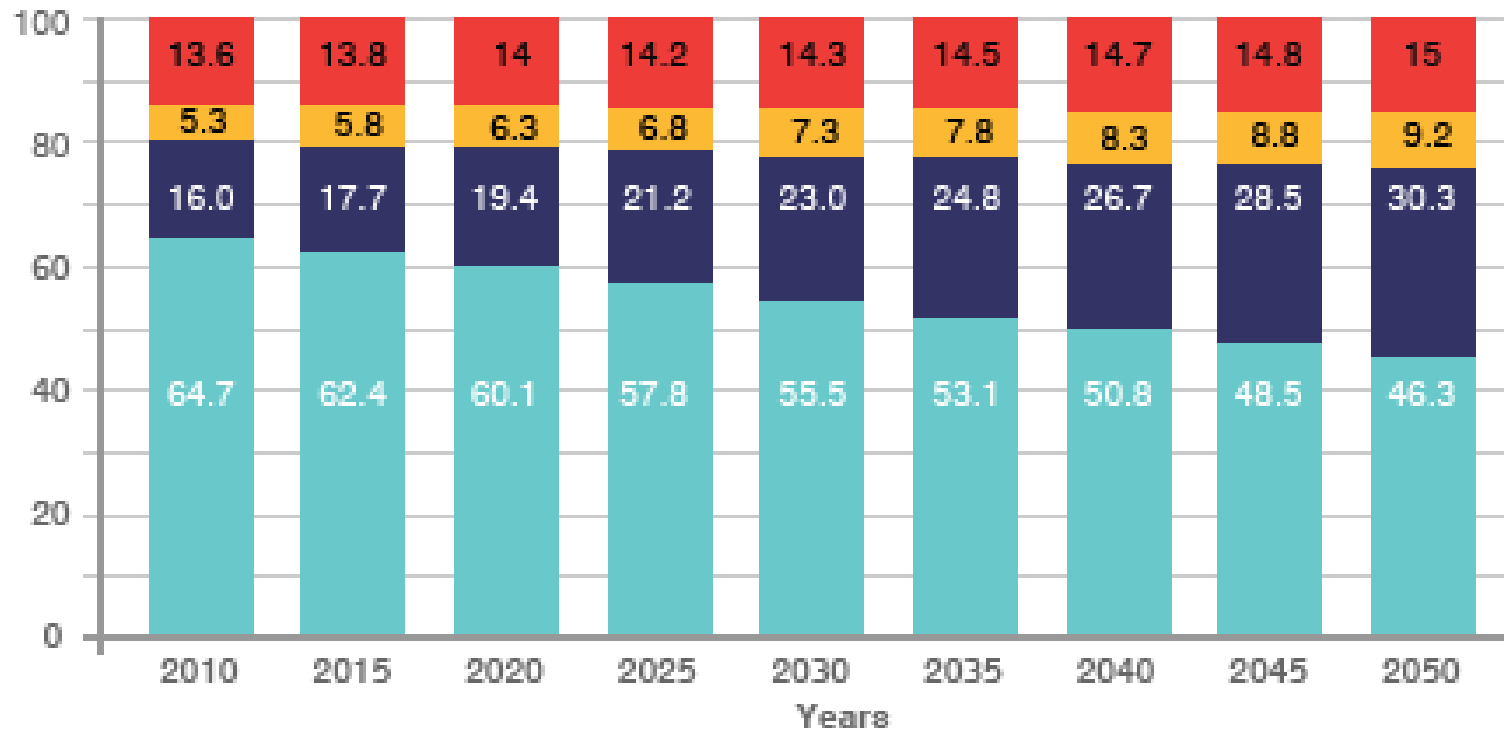
Presenter Disclosures

Lisa L. Barnes has no disclosures.

U.S. is becoming increasingly diverse

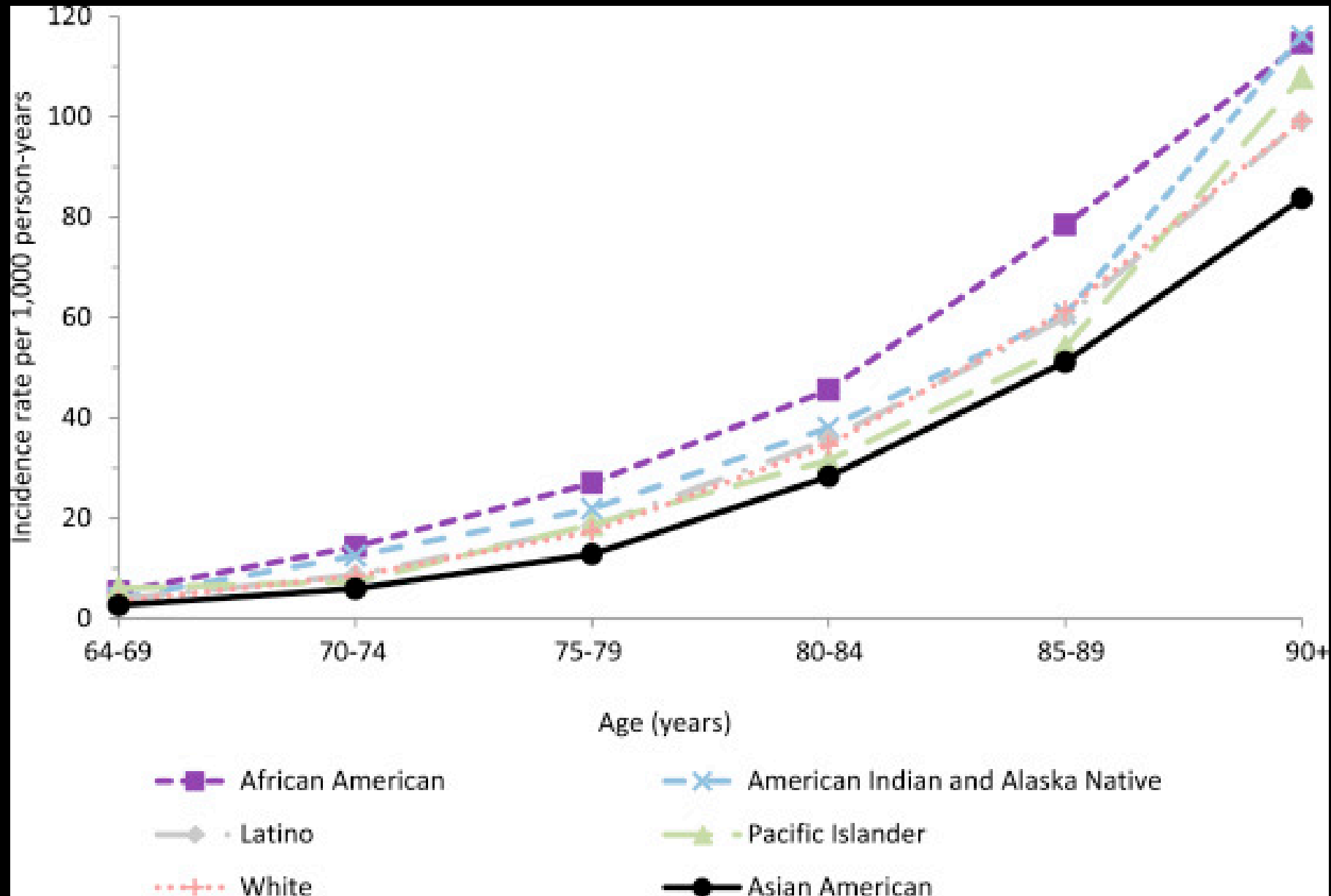
US POPULATION PROJECTIONS TO 2050

Percentage by race and Hispanic origin



SOURCE: US Census Bureau

Dementia incidence rates by age and ethnicity



Why are minority populations at greater risk?

- Genetics?
- Differential burden of vascular disease?
- Stigma or mistrust; fail to engage with medical system?
- Stress?

What is stress?

- Your mind and body's response/reaction to a real or imagined threat, insult, event, or change in environment (stressors)
- Stressors can be external or internal

External

- Loss
- Tragedy
- Changing jobs or moving

Internal

- Thoughts
- Beliefs
- Attitudes

Types of Stressors



INJURY



Emotional



Career
Pressures



Illness



Physical



Environmental



Cultural experiences –
historical AND current
are important and can
have an impact on how
we age



[illegible]

Minority Aging Research Study (MARS)

- Began enrollment in August 2004
- Volunteer cohort
- >750 African Americans, >65 years, enrolled without [known] dementia
- Recruited from churches, senior buildings & organizations
- Annual in-home cognitive testing, risk factor assessment, and blood draw
- Follow-up rate > 90% among survivors (up to 14 years follow-up)
- Recruitment for autopsy (optional); 46% have agreed

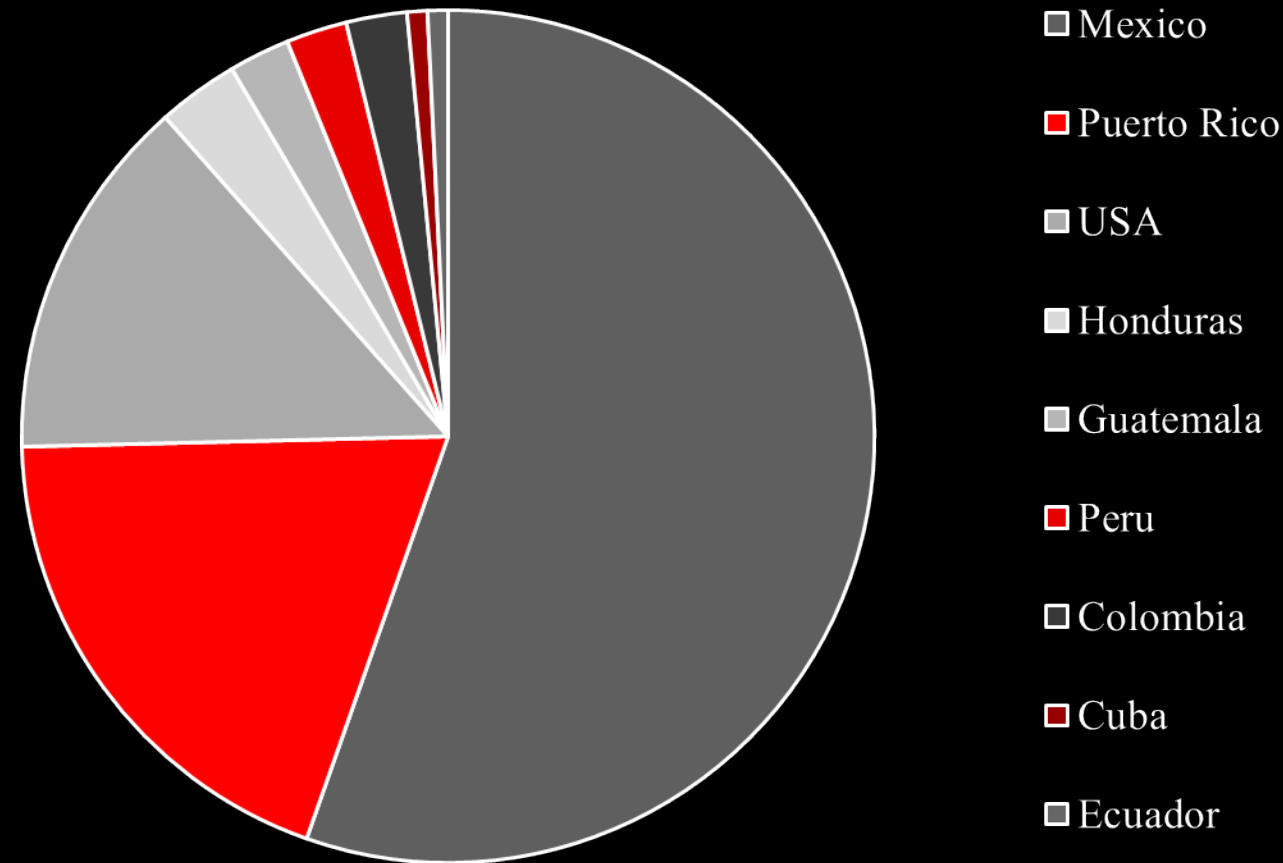


Latino Core (2016)



- >200 enrolled
- Inclusion criteria are:
 - Older Latinos/Hispanics
 - No known dementia diagnosis
 - Willing to donate blood
 - Willing to consider organ donation
- Participants represent 36 Chicago communities and 30 suburbs

Participants represent 9 countries from Latin America



Psychosocial Stressors and cognition

School segregation
Perceived discrimination
Perceived Stress

Education and Cognition in minority populations

- Years of education correlates with higher cognitive function
- But the association varies across years of education
- Educational quality – may be a better predictor of cognitive function
 - Literacy
 - School location (urban/rural; region of country)
 - School Expenditures
 - Length of primary school term
 - Number school days attended
 - Student-teacher ratio

School Segregation Outlawed



Ruling Does Not End Segregation At Once; Further Hearings Set To Decide How to Halt Practice

WASHINGTON, May 17 (AP)—The Supreme Court ruled today that the states of the nation do not have the right to separate Negro and white pupils in different public schools.

Chief Justice Warren read the historic decision to a packed but hushed gallery of spectators nearly two years after Negro residents of four states and the District of Columbia went before the court to challenge the principle of segregation.

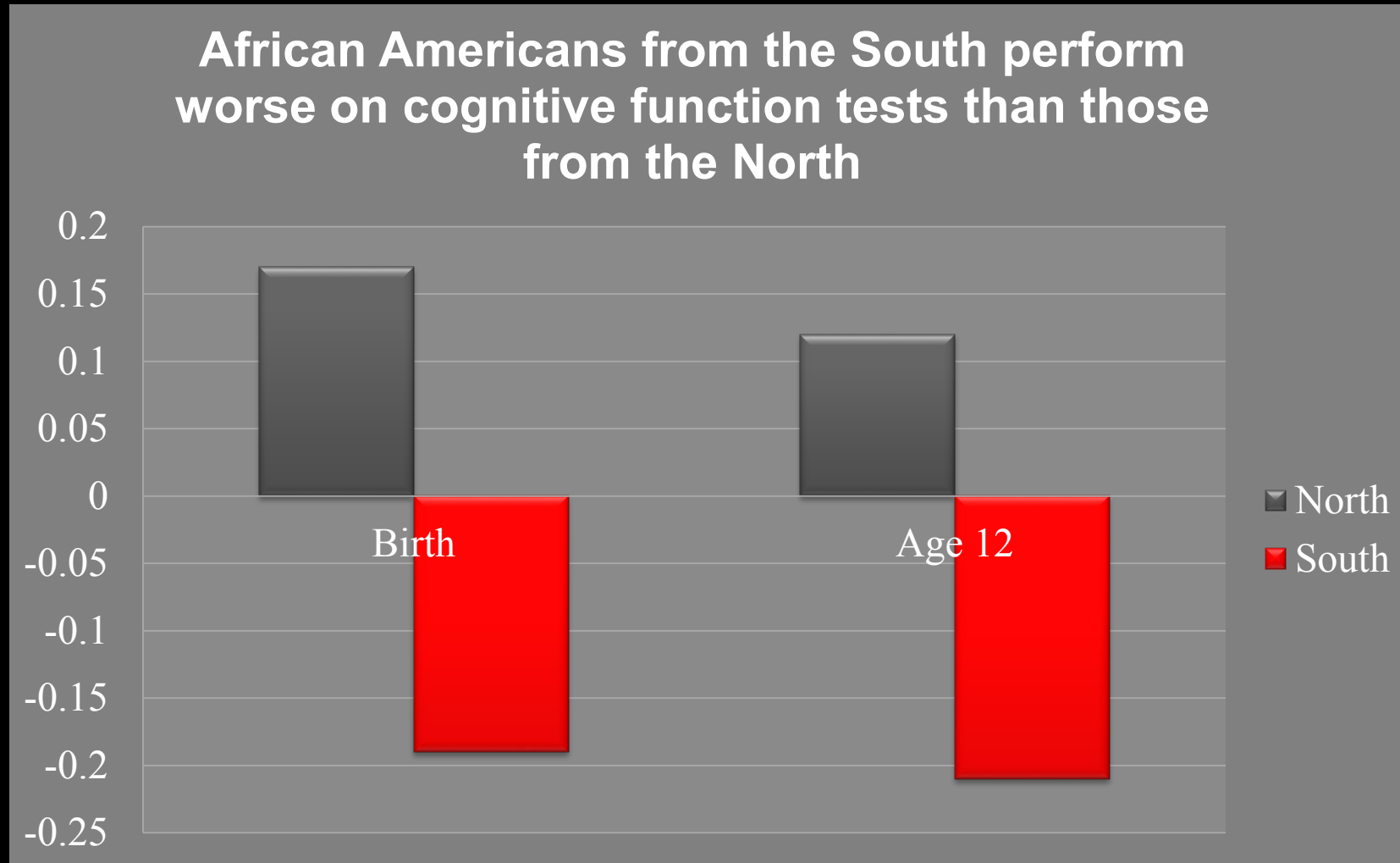
Dean Acheson, secretary of state under Former President Harry Truman, was in the courtroom to hear the ruling. He called it "great and statesmanlike."

Atty. Gen. Brownell was also present. He declined comment immediately. Brownell and the Eisenhower administration, like Truman's, opposed segregation.

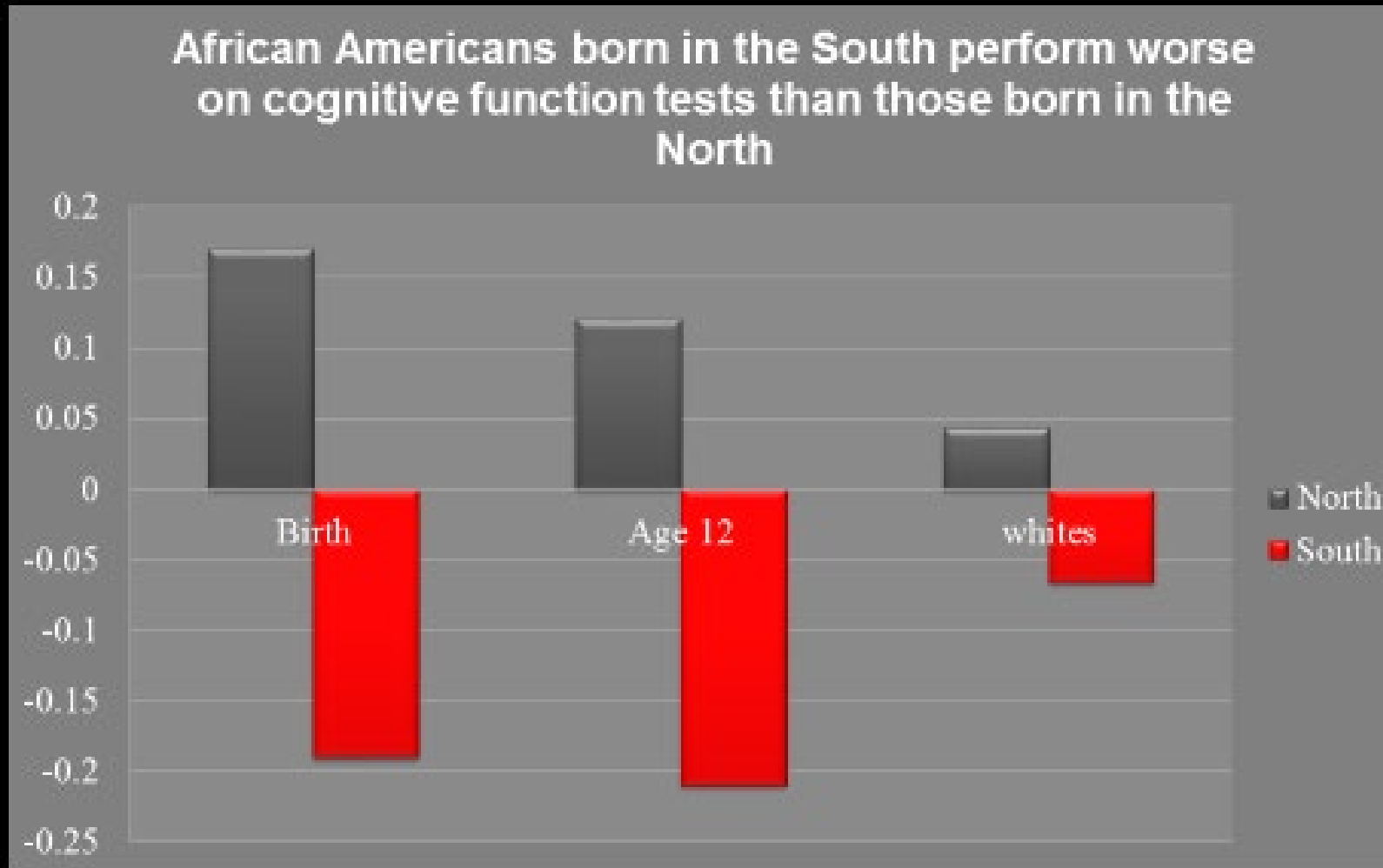
For years 17 Southern and "border" states have imposed

presented: Does segregation of children in public schools solely on the basis of race, even though the physical facilities and other 'tangible' factors may be equal, deprive the children of the min-

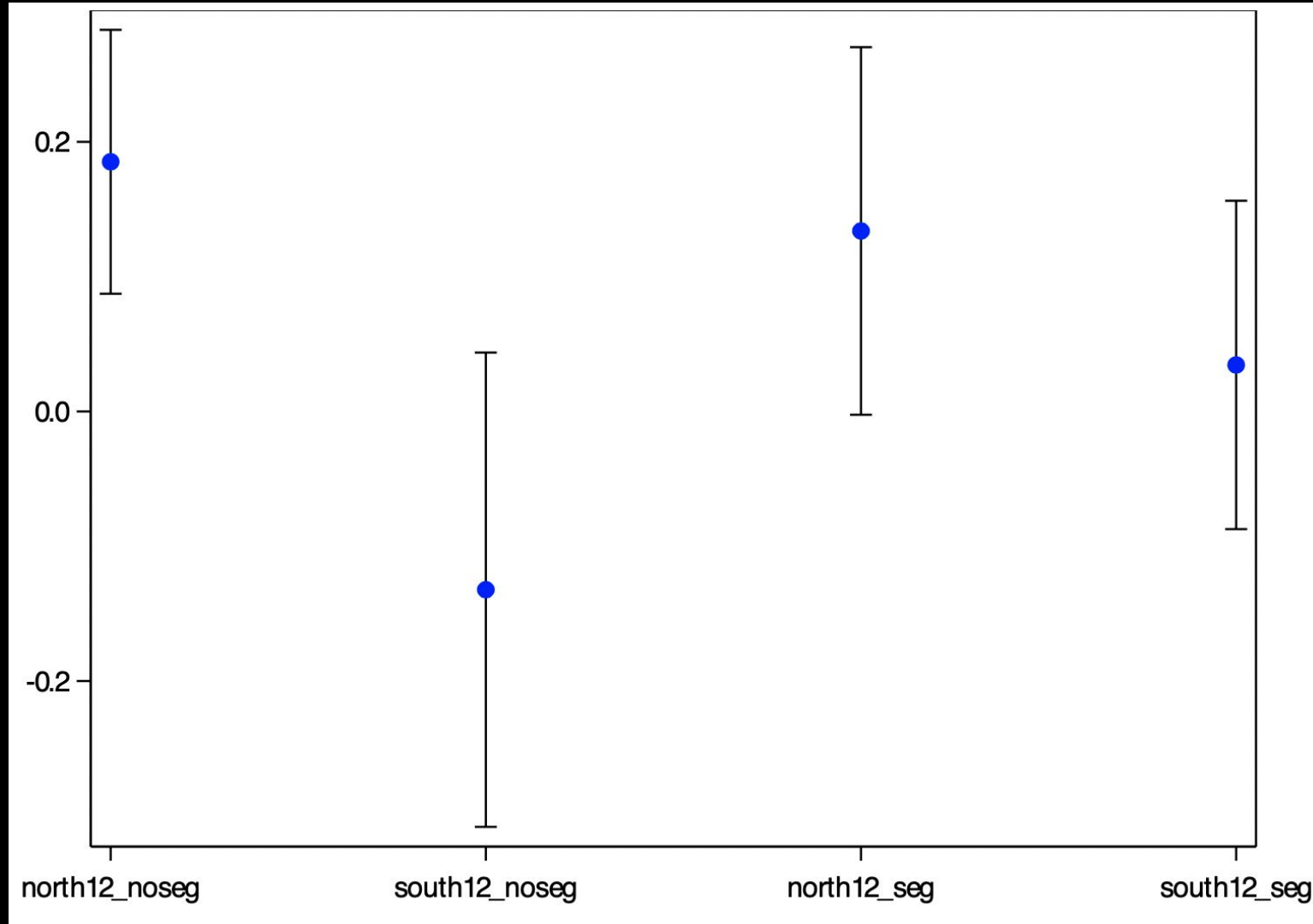
Early life residence and cognition



Early life residence and cognition



African Americans from non-segregated schools from the South perform the worse on a composite measure of global cognition



Perceived Discrimination

- Discrimination is an important psychosocial stressor with links to adverse health outcomes
- Some, but not all studies have found it partially explains disparities in health



Every Day Discrimination

In your day-to-day life how often do these happen to you?

- You are treated with less courtesy than other people.
 - You are treated with less respect than other people.
 - You receive poorer service than other people at restaurants or stores.
 - People act as if they think you are not smart.
 - People act as if they are afraid of you.
 - People act as if they think you are dishonest.
 - People act as if they're better than you are.
 - You are called names or insulted.
 - You are threatened or harassed.
-

Perceived discrimination is associated with worse cognition, particularly episodic memory & perceptual speed

Variables	Global cognition	Episodic memory	Perceptual speed
Age	-0.02 (.004)**	-0.03 (.004)**	-0.04 (.005)**
Sex	-0.08 (.052)	-0.17 (.064)*	-0.17 (.076)*
Education	0.07 (.007)**	0.04 (.008)**	0.09 (.010)**
Discrimination	-0.02 (.010)*	-0.03 (.013)*	-0.04 (.015)*

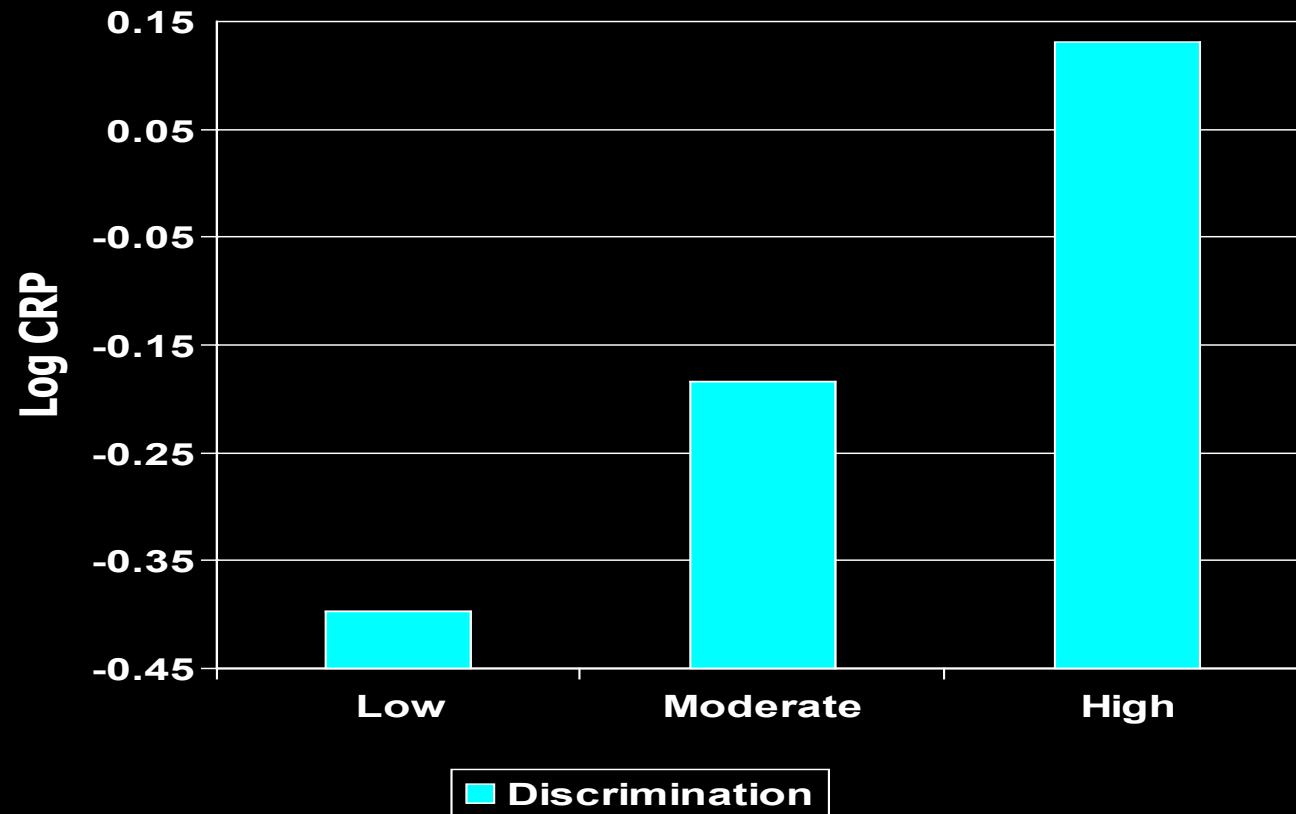
**=p<.01; *=p<.05

Perceived discrimination is associated with worse cognition in Latinos, but no association of acculturation

Variables	Global	Episodic	Semantic	Working	Perceptual
Discrimination	-0.06 (0.02)**	-0.06 (0.03)*	0.06 (0.03)*	-0.07 (0.03)*	-0.07 (0.02)**
Acculturation	0.09 (0.06)	0.09 (0.09)	0.13 (0.10)	0.05 (0.09)	0.09 (0.08)
Disc x Time	NS	NS	NS	NS	NS
Accult x Time	NS	NS	NS	NS	NS

**=p<.01; *=p<.05

Discrimination and CRP



Self-reported experiences of everyday discrimination are associated with elevated C-reactive protein levels in older African-American adults

Tené T. Lewis ^{a,*}, Allison E. Aiello ^b, Sue Leurgans ^{c,d,e}, Jeremiah Kelly ^{c,d}, Lisa L. Barnes ^{c,d,f}

^a Department of Epidemiology and Public Health, Yale University School of Medicine, New Haven, CT, USA

^b School of Public Health University of Michigan, Ann Arbor, MI, USA

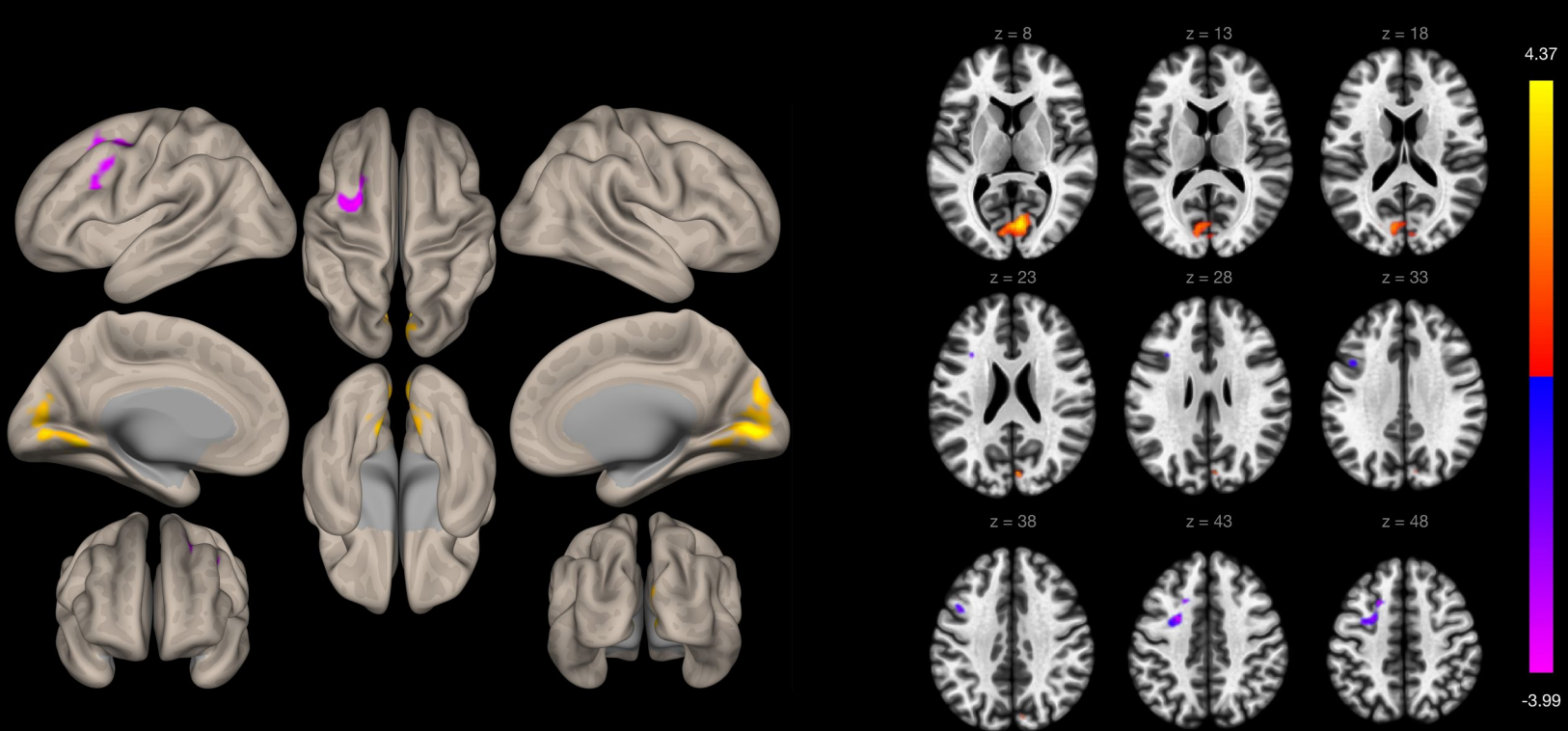
^c Rush Alzheimer's Disease Center, Rush University Medical Center, Chicago, IL, USA

^d Department of Neurological Sciences, Rush University Medical Center, Chicago, IL, USA

^e Department of Internal Medicine, Rush University Medical Center, Chicago, IL, USA

^f Department of Behavioral Sciences, Rush University Medical Center, Chicago, IL, USA

Perceived Discrimination and Resting-State fMRI



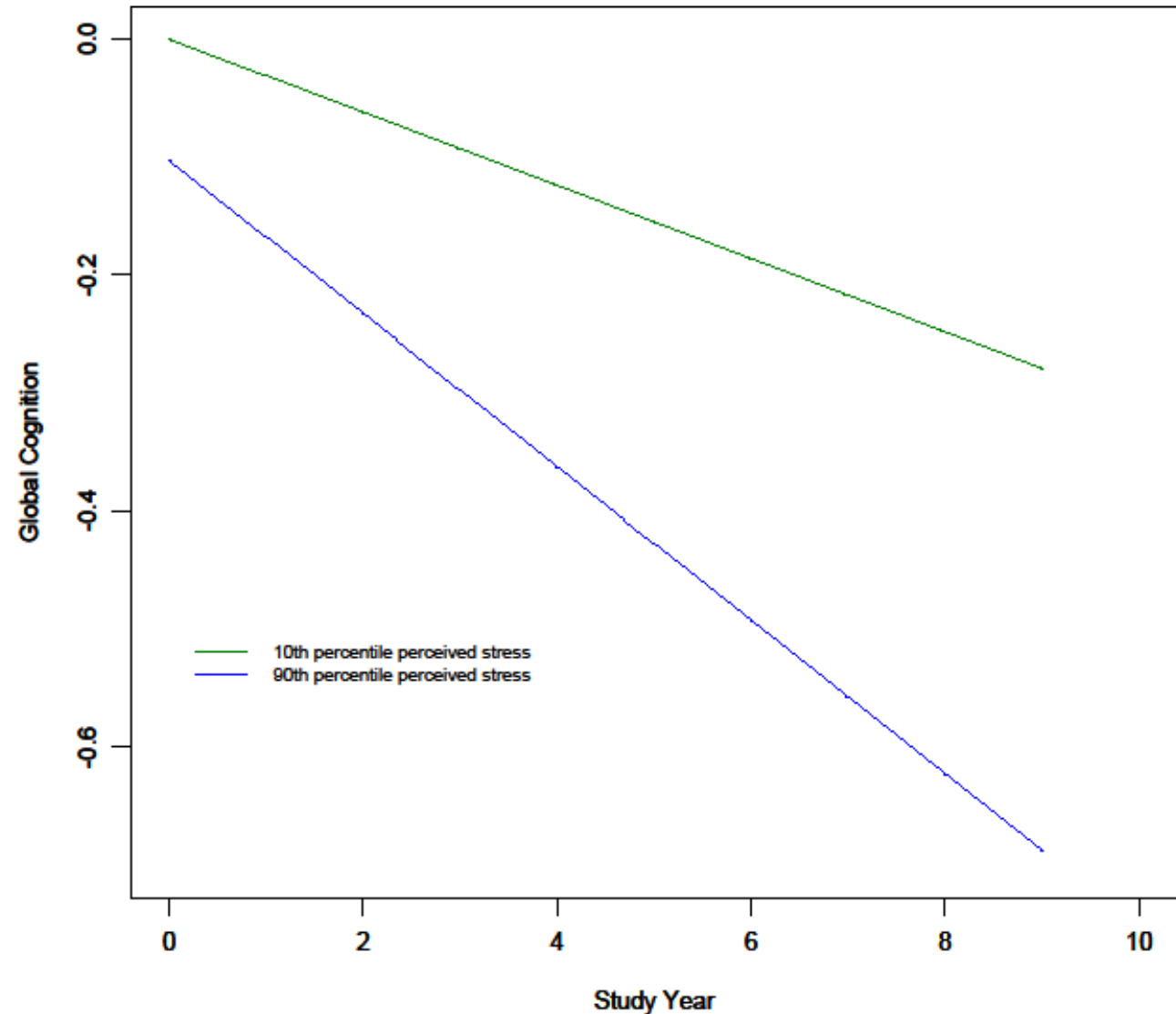
Perceived discrimination associated with (1) less functional connectivity of the left insula to the dorsolateral prefrontal cortex, and (2) greater functional connectivity of the left insula to the visual cortex

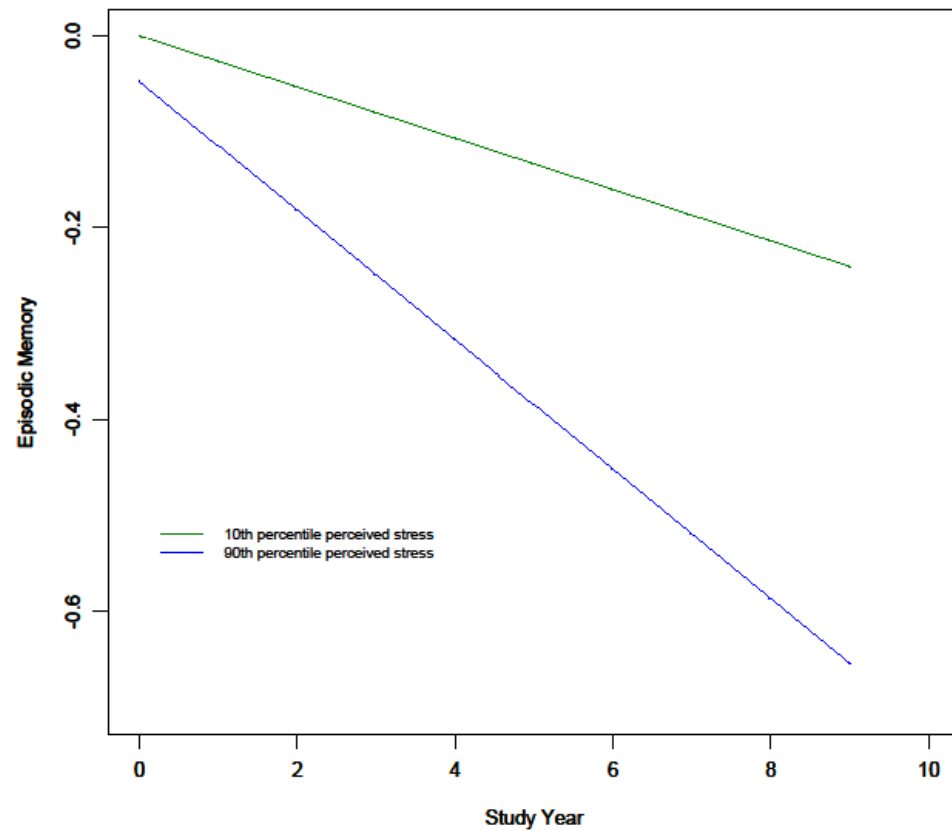
Correlates of Perceived Stress (MARS)

degree to which a person finds their lives unpredictable,
uncontrollable, and overloading

Predictor Variable	Parameter Estimate	Standard Error	<i>p-value</i>
Depressive Symptoms	0.20	0.06	< 0.001
Neuroticism	0.07	0.02	< 0.001
Financial Burden	0.39	0.06	< 0.001
Social Network	-0.03	0.02	0.04
Life Space	-0.29	0.10	0.004
Purpose in Life	-0.62	0.22	0.006

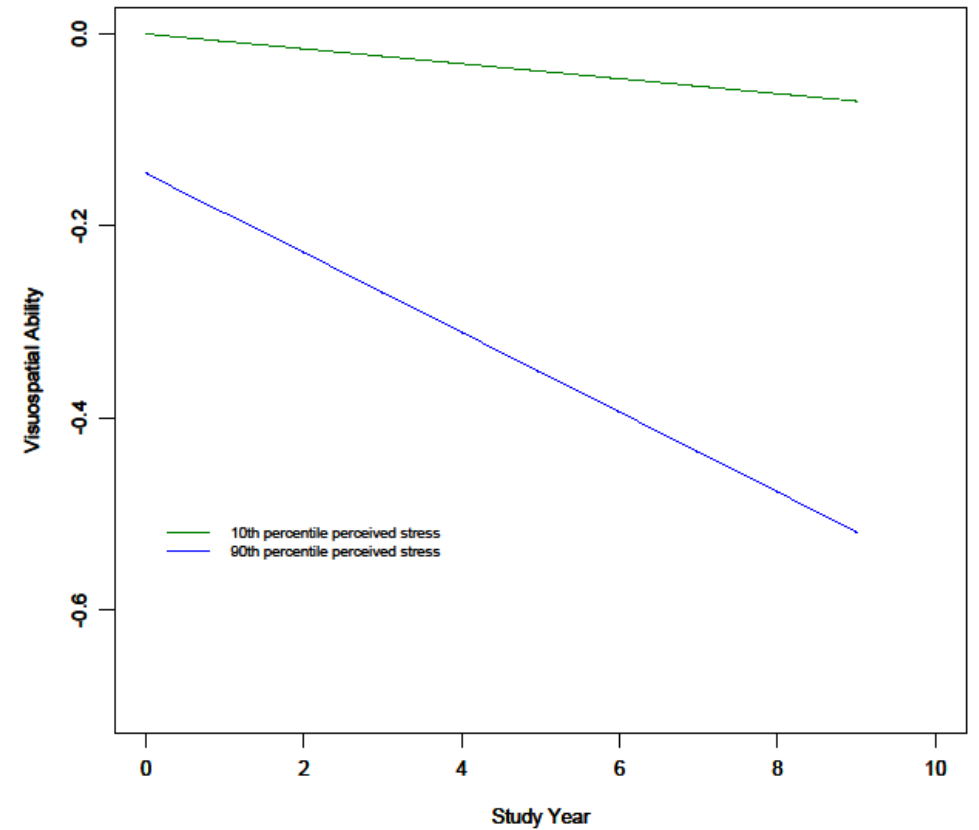
Perceived stress is related to faster decline





Episodic memory

Turner et al., 2017



Visuospatial
Ability

Conclusions

- Psychosocial stressors are important factors to consider in cognitive function of minority elders
- Socio-cultural history of minority populations may be a unique stressor that lowers cognitive function
- To the extent that some psychosocial factors are modifiable, may represent a strategy to slow decline, and potentially delay the onset of dementia

Acknowledgments

National Institute on Aging
Alzheimer's Association
Illinois Department of Public Health
National Institute on Minority Health and Health
Disparities

Study Participants of Rush Cohorts:

Chicago Health and Aging Project
Minority Aging Research Study
Clinical Core
Latino Core
Rush Memory and Aging Project
Religious Orders Study

RADC Faculty & Outside Collaborators

- Neelum Aggarwal, MD
- Konstantinos Arfanakis, PhD
- Zoe Arvanitakis, MD, MS
- David Bennett, MD
- Kate Blizinsky, PhD
- Patricia Boyle, PhD
- Aron Buchman, MD
- Ana Capuano, PhD
- Robert Dawe, PhD
- Jose Farfel, MD, PhD
- Debra Fleischman, PhD
- Christopher Gaiteri, PhD
- Crystal Glover, PhD
- Jeffrey Hausdorff, PhD
- Bryan James, PhD
- Namhee Kim, PhD
- Melissa Lamar, PhD
- Sue Leurgans, PhD
- David Marquez, PhD
- Sukriti Nag, MD, PhD
- Shahram Oveisgharan, MD
- Julie Schneider, MD, MS
- Raj Shah, MD
- Shinya Tasaki, PhD
- Yanling Wang, PhD
- Robert Wilson, PhD
- Lei Yu, PhD
- Denis Evans, MD
- S. Duke Han, PhD (USC)
- Tene Lewis, PhD (Emory)
- Bharat Rajan, PhD (UC Davis)
- Jennifer Weuve, PhD (Boston University)